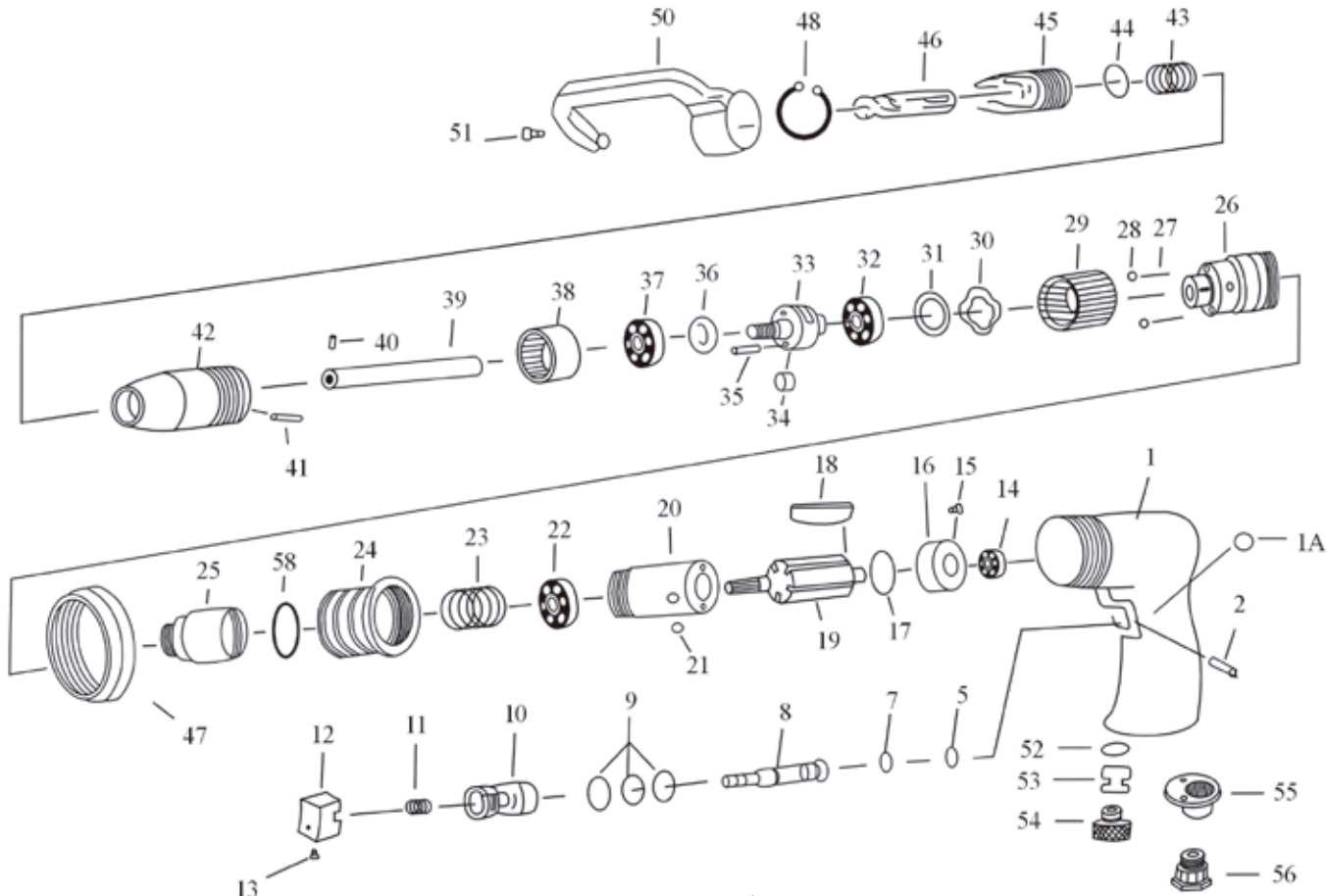


Call 1.800.221.9705 for questions concerning performance of the product or other inquiries.

PARTS BREAKDOWN



Parts List

Index No.	Part No.	Description	Qty	Index No.	Part No.	Description	Qty	Index No.	Part No.	Description	Qty
1	1754-01	Housing	1	23	1754-23	Spring	1	43	1754-43	Spring	1
1A	1754-02	Ball (ϕ 6.35mm)	1	24	1754-24	Clamp Nut	1	44	1754-44	Retainer	1
2	1754-03	Pin (ϕ 3 x 27.8)	1	25	1754-25	Gear Case	1	45	1754-45	Supporter	1
5	1754-04	O-ring (3.9 x 2.25 x 2)	1	26	1754-26	Gear Housing	1	46	1721	Drill Bit (ϕ 8)	1
7	1754-05	O-ring (ϕ 3.5 x 1.5)	1	27	1754-27	Spring	2	46A	1720	Drill Bit (ϕ 6.5)	2
8	1754-06	Valve Stem	1	28	1754-28	Ball (ϕ 4)	2	46B	1724	Drill Bit (ϕ 10)	1
9	1754-07	O-Ring (P14)	3	29	1754-29	Adjusting Nut	1	47	1754-47	Lock Nut	1
10	1754-08	Valve Bushing	1	30	1754-30	Wave Washer (6200)	2	48	1754-48	Retaining Ring	1
11	1754-09	Spring	1	31	1754-31	Retaining Ring (S22)	1	50	1754-50	2" Arm (optional)	1
12	1754-10	Trigger	1	32	1754-32	Ball Bearing (R8)	1	50B	1754-50B	5.5" Arm	1
13	1754-11	Set Screw (M4 x 4)	1	33	1754-33	Gear Cage	1	51	1754-51	Screw (M4 x 8)	1
14	1754-12	Ball Bearing (696zz)	1	34	1754-34	Gear	2	52	1754-52	O-Ring (P18)	1
15	1754-15	Set Screw (M3 x 12)	1	35	1754-35	Pin (ϕ 3 x 17.8)	2	53	1754-53	Muffler Nut	1
16	1754-16	Rear End Plate	1	36	1754-36	Washer	1	54	1754-54	Muffler	1
17	1754-17	O-Ring (ϕ 33.05 x 1.78)	1	37	1754-37	Ball Bearing (R6zz)	1	55	1754-55	Muffler Retainer	1
18	1754-18	Rotor Blades	5	38	1754-38	Internal Gear	1	56	1754-56	Air Inlet	1
19	1754-19	Rotor	1	39	1754-39	Bit Holder	1	57	1754-57	Service Wrench (2.5mm)	1
20	1754-20	Cylinder	1	40	1754-40	Set Screw (M5 x 5)	1	58	1754-58	O-Ring	2
21	1754-21	Ball (ϕ 5)	1	41	1754-41	Set Screw (M4 x 6)	1				
22	1754-22	Ball Bearing (608zz)	1	42	1754-42	Attachment	1				