



Model # 1222

**HEAVY-DUTY
1/4"
90° ANGLE HEAD
DIE GRINDER &
STANDARD DUTY
1/4"
DIE GRINDER SET**

SALES AND MARKETING
2417 SEAMAN AVENUE
SOUTH EL MONTE, CA 91733
Phone: (800) 221-9705
USA Toll Free
Fax: (877) 318-2194
Phone: (626) 228-3170
Fax: (626) 228-3124

372 OLD US HIGHWAY
52 SOUTH
MT. AIRY, NC 27030
(800) 221-9705
Phone: (336) 786-6432
Fax: (336) 786-4992



Astro

E-mail : astrotools@astrotools.com
WEBSITE : www.astrotools.com



AIR TOOLS

SHOP EQUIPMENT PAINT & BODY UNDERCAR KIT HYDRAULICS



REAR EXHAUST AIR FLOW SYSTEM
directs air away from work surface

**RIB TEXTURED HANDLE
PROVIDES A FIRM GRIP**

LEVER THROTTLE
for feathering control

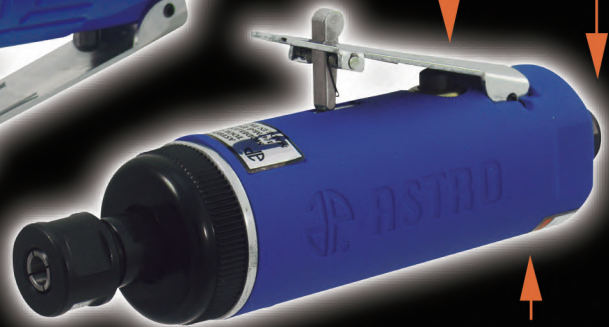
**COMPOSITE HANDLE
REDUCES VIBRATION**

#1240 - Blue Composite
Body 1/4" 90° Angle
Die Grinder



**FRONT
EXHAUST**

#1206A - Composite Body
1/4" Medium Die Grinder



- Compact and lightweight
- Built-in regulator

Model	Free Speed	Overall Length	Net Weight	Sound Power	Sound Pressure
1240	20,000rpm	5-3/4" (146mm)	1lbs. (.45kg)	103.7 db(A)	92.3 db(A)
1206A	22,000rpm	6-3/4" (171mm)	1-1/8lbs. (.51kg)		
Air Inlet Thread NPT	Air Hose I.D. Size	Air Pressure	Avg. Air Consumption	Collet Size	Motor
1/4"	3/8" (10mm)	90-120psi	3cfm	1/4"	1/3hp

MANUFACTURED FOR LONGER LIFE