



Model:

# 200SLMAX

Product Type:

## SUNLIGHT 2000 LUMEN RECHARGEABLE CORDLESS PROFESSIONAL COLOR MATCH FLOOD LIGHT



### WARNING



Study, understand and follow all instructions provided with this product. Read these instructions carefully before installing, operating, servicing or repairing this tool. Keep these instructions in a safe accessible place.  
**DO NOT LOOK DIRECTLY INTO LIGHT SOURCE.**



## Astro Pneumatic Tool Company

www.astrotools.com

### INTENDED USE OF THE TOOL

The 200SLMAX color match light is designed to be used as a flood light for collision repair, detailing, paint correction and paint booth use. Do not use this tool outside of the designed intent. Never modify the tool for any other purpose or use.

### 1 YEAR LIMITED WARRANTY

• Astro Pneumatic Tool Co. warrants our products to the original user against defective material or workmanship for a period of 1 year (except where noted on our price schedule) from the date of 1st use. Astro reserves the right to determine whether the product failed because of defective material, workmanship or other causes and to charge back for missing parts. Astro Pneumatic Tool Co., at its discretion, will repair products covered under this warranty free of charge. The distributor should direct the original user to return the product (with the exceptions listed below) with the distributor's name, address, adequate proof of date of purchase or a copy of warranty card, and a short note explaining the problem.  
**Failures caused by accident, alteration, or misuse are not covered by this warranty.**

• Astro Pneumatic Tool Co. or its authorized service representatives must perform all warranty repairs. Any repair to the product by unauthorized service representatives voids this warranty. The rights under this warranty are limited to the original user and may not be transferred to subsequent owners.

• This warranty is in lieu of all other warranties, expressed or implied, including warranties of merchantability and fitness for a particular purpose. Some states do not allow the exclusion of limitations of incidental or consequential damages so the above limitations may not apply to you.



### WARNING



**Caution: To help prevent personal injury avoid looking directly at light.**

- Use of this product can expose you to chemicals including ethylene glycol, gasoline vapors and engine exhaust, which are known to the State of California to cause cancer, birth defects, or reproductive harm. For more information, visit [www.P65Warnings.ca.gov](http://www.P65Warnings.ca.gov). Always wear ANSI approved safety equipment, safety glasses and clothing when using this product. Study, understand, and follow all instructions provided with this product. Failure to read and follow all warnings and operating instructions may result in damages and serious injury or death.
- Always wear ANSI approved goggles when using this product. (Users and Bystanders).
- Never use this tool for any application other than for which it was designed.
- Only use accessories designed for this tool.
- Never alter or modify this tool in any way.
- Improper operation and/or maintenance of the tool, modification of the tool, or use of the tool with accessories not designed for it could result in serious injury or death.
- Always select the correct accessories of the correct size and design for the job that you are attempting to perform.
- Always work in a clean, safe, well-lit, organized and adequately equipped area.
- Do not begin repairs without assurance that vehicle is in secure position, and will not move during repair.



**PLEASE DO NOT RETURN ANY PRODUCT WITHOUT CALLING 1-800-221-9705 FOR INSTRUCTIONS**



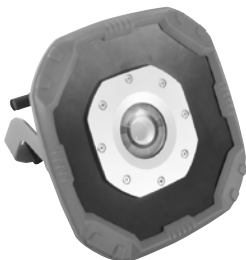
### Before Use

**Before use, check the parts diagram and part number listing on page 2 to make sure all parts are included. If any parts are missing or damaged, please call your distributor.**

### PRODUCT INFORMATION:

- Replicates the light quality of the Sun, achieving a high CRI of 96 - guaranteeing an accurate representation of surface colors and imperfections
- 2000 lumens of warm-white light operating at the 4000K color temperature range popular among painters and detailers
- Solid aluminum construction with rubber over-mold protection, IP65 water proof

### SUNLIGHT 2000 LUMEN RECHARGEABLE CORDLESS PROFESSIONAL COLOR MATCH FLOOD LIGHT



MADE IN CHINA

### SPECIFICATIONS:

Color Temperature : 4000K  
 Water Proof : IP65  
 Light Output : 700 - 2000 Lumens  
 Battery Life : 2 - 6hrs  
 Charge time : 3.5-4hrs  
 Li-ion Rechargeable : 11.1V/4400 mAh

**DO NOT DISCARD – GIVE TO USER**



Model:

# 200SLMAX

Product Type:

## SUNLIGHT 2000 LUMEN RECHARGEABLE CORDLESS PROFESSIONAL COLOR MATCH FLOOD LIGHT



### WARNING



- 1) Avoid looking directly into the beam, as it can be blinding.
- 2) Don't use the lamp near open flames.
- 3) Do not disassemble.
- 4) Lamp gets hot after long use! Cool down the lamp before touching.
- 5) If lamp is stored for one month or more, fully charge it prior to storage.
- 6) Don't leave battery flat for excessive periods of time. Leaving the battery discharged can make recharging difficult.
- 7) The battery cannot be replaced.
- 8) The battery must be removed from the appliance before it is scrapped.
- 9) The appliance must be disconnected from the charger when removing the battery.
- 10) The battery should be disposed of safely.

#### NOTE

Before disposing of damaged goods, check with your state Environmental Protection Agency to find out about special restrictions on the disposal of the lamp and batteries or return them to a certified service center for recycling.

### USING INSTRUCTIONS

The ON/OFF switch is located on the back of the lamp :

- Press switch once: low brightness
- Press switch a second time: full brightness
- Press switch a third time: off

### CHARGING PROCESS

- Never attempt to open for any reason.
- Do not store in locations where the temperature may exceed 40 °C.
- Charge only at ambient temperatures between 4 °C and 40 °C.
- Charge only using the charger provided with the tool.
- Do not cause short circuits. If connection is made between the positive (+) and negative (-) terminal directly or via accidental contact with metallic objects, the battery is short circuited and an intense current will flow causing heat generation which may lead to casing rupture or fire.
- Do not heat. If batteries are heated to above 100 °C, sealing and insulating separators and other polymer components may be damaged resulting in electrolyte leakage and/or internal short circuiting leading to heat generation causing rupture or file. Moreover do not dispose of the batteries in fire, explosion and/or intense burning may result.

## PARTS BREAKDOWN

Call 1.800.221.9705 for questions concerning performance of the product or other inquiries.

